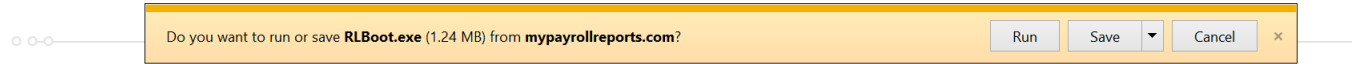


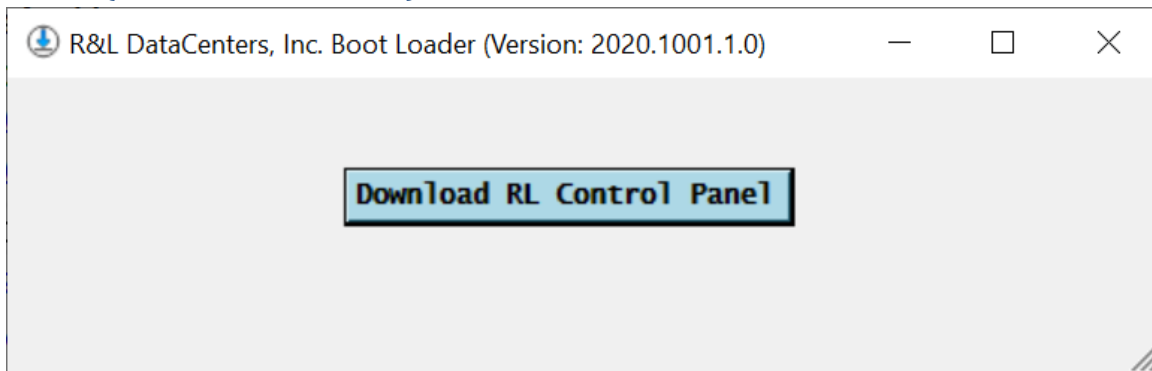
I. General description of the install process

A. RLBoot.exe- resides on the R&L website. The user should click the RLBoot.exe link and then click 'Run' to begin the install process.

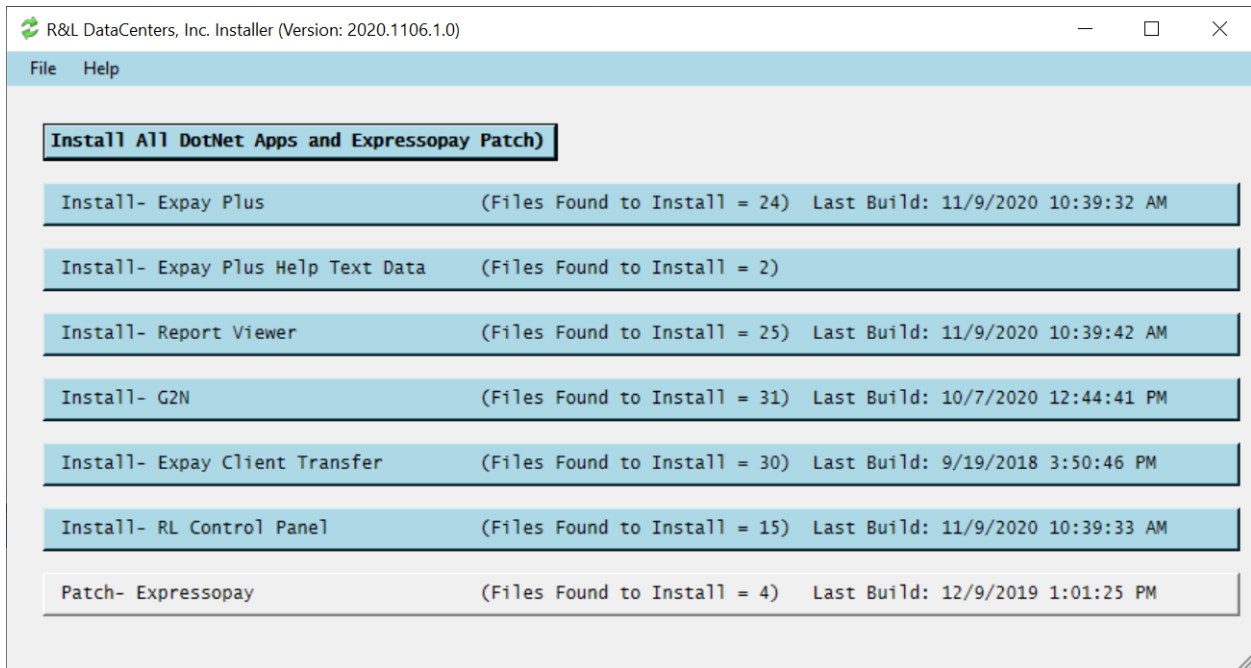
RLBoot.exe (RL Control Panel Install) Test
RLBOOT,EXE *TEST* TO CREATE SHORTCUT TO RLCONTROLPANEL



The user is then prompted to download the RL Control Panel app (RLControlPanel.exe)



B. RLInstaller.exe- prompts the user to 'Install All DotNet Apps and Expressopay Patch'



1/26/2021

C RInstaller.exe- 'Install All DotNet Apps and Expressopay Patch' will first archive a copy of 'c:\RLInstall' and then copy the new RL App updates to the users 'c:\RLInstall' folder and then complete the install process.

D A shortcut to 'RLControlPanel.exe' is created on the user's desktop and can be used to.

1. Verify system information
2. Verify cloud connectivity
3. Verify currently installed RL App versions
4. Enable/Disable .Net Proxy
5. Create Expay+ demo database using client's production database.
Selected clients can be added to a special manifest file to allow Expay+ to use the production Access databases.
6. Run available RL Apps
7. RLControlPanel will check the cloud for App updates when started

Using the RL Control Panel app is not required but is recommended to ensure all apps remain updated.

